

# HydroCloud for H2

## Intelligent Lift Management



## HydroCloud for H2

All H2 units come with HydroCloud (Hydroware's IoT solution and portal). HydroCloud enables remote real time and historical data on every connected HydroElite and TractionElite. Use any smart device and standard web browser to access the portal and particular lift. Come prepared for field visits, troubleshoot remotely or making sure all documentation is updated. The IoT connection virtually puts you right in front of the lift - with safety restrictions.



### Groups & Access

- **HydroCloud Portal**  
View all your lifts and current status.
- **Compare data**  
Easily segment and compare multiple lifts e.g. view most common errors.
- **No App needed**  
Use any web browser.
- **Group and distribute**  
Group you lifts for easy navigation. Create organisations and give access to different users.
- **Push notifications**
- **Remote software updates**

All you need is a smart device and a web browser



## Real Time and Historical Data

Here are some of the features that can be viewed remotely via HydroCloud.

### Real time data

- Lift operating status
- Lift position
- Lift speed
- Safety circuit overview
- Door & light curtain status
- Machine room temperature
- Oil temperature & pressure
- Error codes
- Door zone status
- Energy consumption
- Software versions
- Lift mode

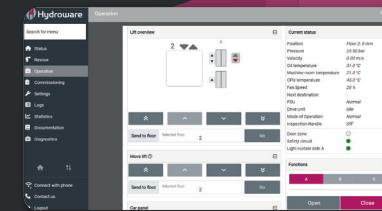
### Historical data

- Error-, historical- and user log
- Most occurring errors
- Normal & re-levelling trips
- Door operations
- Lift availability
- Travel curve

## 10-inch touch display & HMI

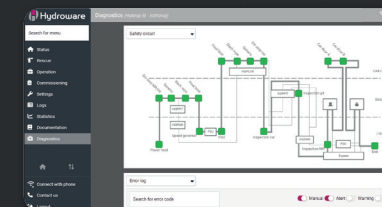
Every H2 unit is fitted with a 10-inch-high resolution touch display. Among other features, the user will be able to find documentation, schematics, historical data and error logs directly in the display. Furthermore, there are instruction movies and language options available. The lift controller is accessible from any smart device and enables the user to connect to the controller from anywhere in the lift shaft.

HydroCloud allows for access to navigate the HMI remotely.



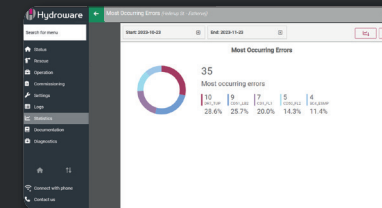
### Operations

Use the operations menu to quickly check the lift's status, location, safety circuit status, machine room temperature, pressure, velocity, door zones, and more. You can also hold doors or make the lift non-callable.



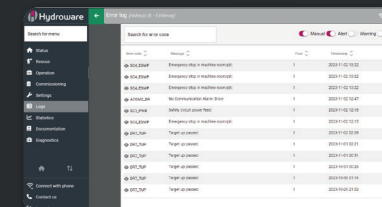
### Diagnostics - Safety Circuit Overview

The safety circuit view provides an instant, visual overview of the circuit's status, on-site or remotely. Identify if it's open and the reason. Click on door inputs for a full overview of all doors in the circuit.



### Statistics - Most Occurring Errors, Travel Curve etc.

Access extensive data, including the latest and historical travel curves, door operations, trips, availability, pressure, temperature, and energy consumption. Further you can view the most occurring errors in a diagram with the frequency of each error's occurrence.



### Logs

The error log displays all errors, their time, codes, and floors. The user log shows actions performed by each user. Sort and search logs by time and type, and click on errors for solution proposals.



## IoT - HydroCloud

Monitor, group and access  
full control over your entire  
lift fleet remotely!

### CONNECTED LIFTS

- Lift street 2a
- Lift street 2b
- Lift street 3
- Avenue lift 1
- Avenue lift 2

Lift  
company

### Group 1

- Lift street 2a
- Lift street 2b

Lift  
owner 1

### Group 2

- Lift street 3

### Group 1

- Avenue lift 1
- Avenue lift 2

Lift  
owner 2



Read more and download our brochures

Contact us for more information!

#### Headquarters: Hydroware AB

Address: Fabriksgatan 13,  
SE-342 21 Alvesta, Sweden  
Phone +46 (0) 472 451 00  
[www.hydroware.global](http://www.hydroware.global)

#### Version 1.0 (10.2024)

Please be advised that the illustrations  
may deviate slightly from the originals,  
and the information provided is subject to  
potential revisions.