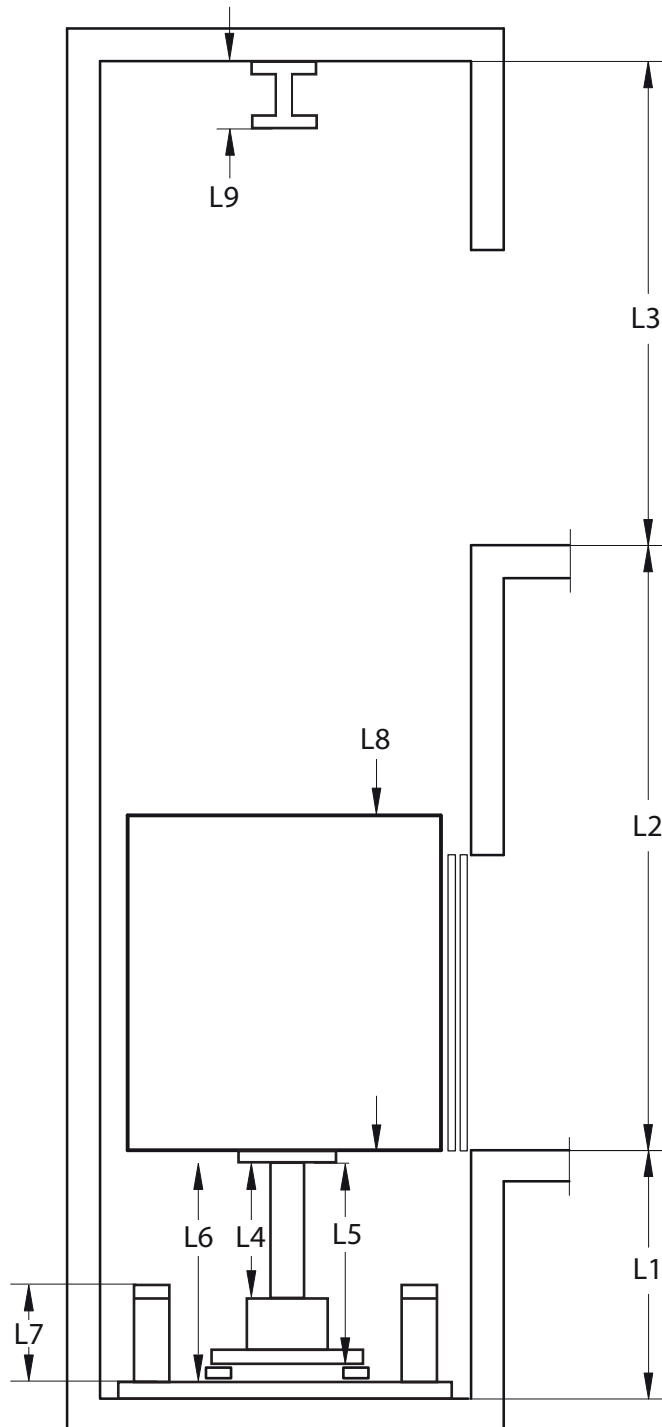


Survey form - Direct acting with borehole

Order number _____

Site address _____

Please note! Car parked at lowest floor.



Pit depth

L1 = _____ mm

Travel

L2 = _____ mm

Headroom

L3 = _____ mm

Piston, Cylinder Casing to car frame connection

L4 = _____ mm

Car frame connection to underside of cylinder baseplate

L5 = _____ mm

Car frame connection to pit steels (can sometimes be same as L5)

L6 = _____ mm

Height, buffer

L7 = _____ mm

Finished floor to highest striking point on car top

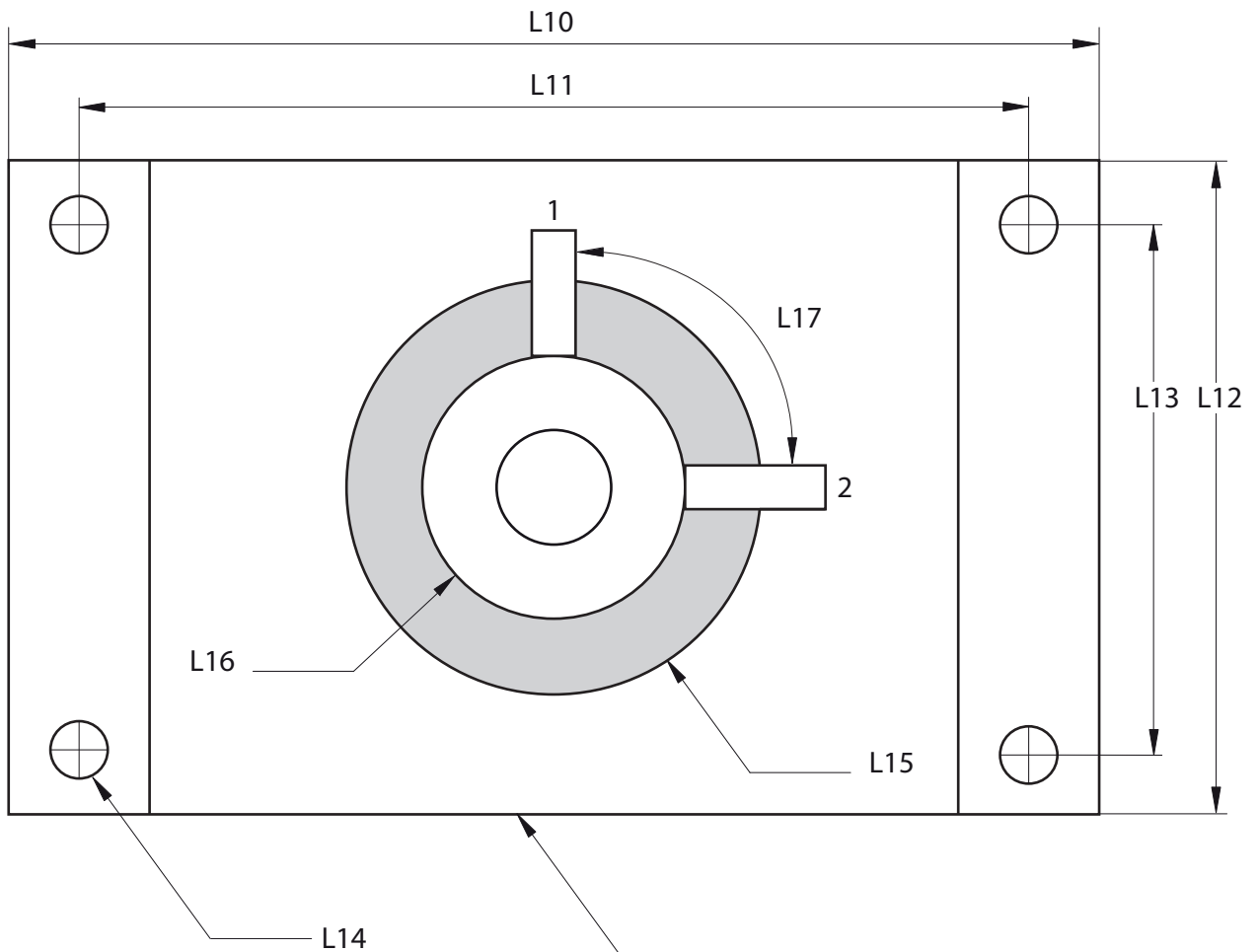
L8 = _____ mm

Height of beam

L9 = _____ mm

If possible: Give existing stroke: _____ mm

If possible: Give depth of borehole: _____ mm



Please note! Give thickness of the cylinder baseplate: _____ mm

Length of cylinder baseplate

L10 = _____ mm

Holes (length)

L11 = _____ mm

Width of cylinder baseplate

L12 = _____ mm

Holes (width)

L13 = _____ mm

Diameter of bolt holes

L14 = _____ mm

Diameter of borehole

L15 = _____ mm

Diameter of cylinder casing

L16 = _____ mm

Position of hose connection

L17 = _____ mm